

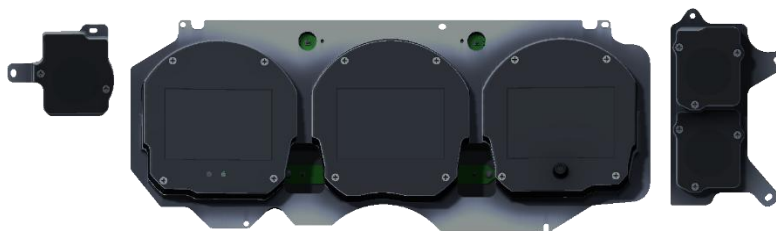


GRFX-70C-CVL

Dakota Digital GRFX Instrument Installation
For 1970-'72 Chevy Chevelle & El Camino (SS-Style Dash)

Your new GRFX-70C-CVL kit includes:

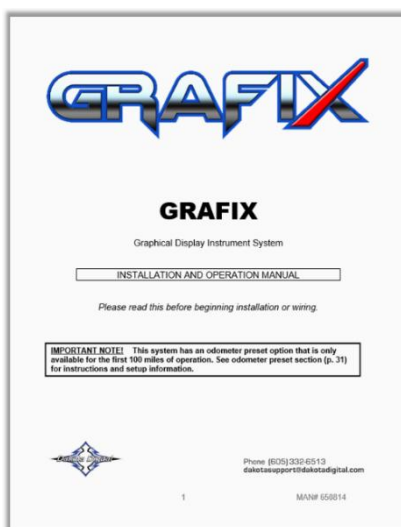
GRFX Display



Universal Sender Pack



Installation Manuals



Control Box



36" Main Harness

Headlight Switch Bracket



Y- Harness



3 to 1 Interconnect Harness

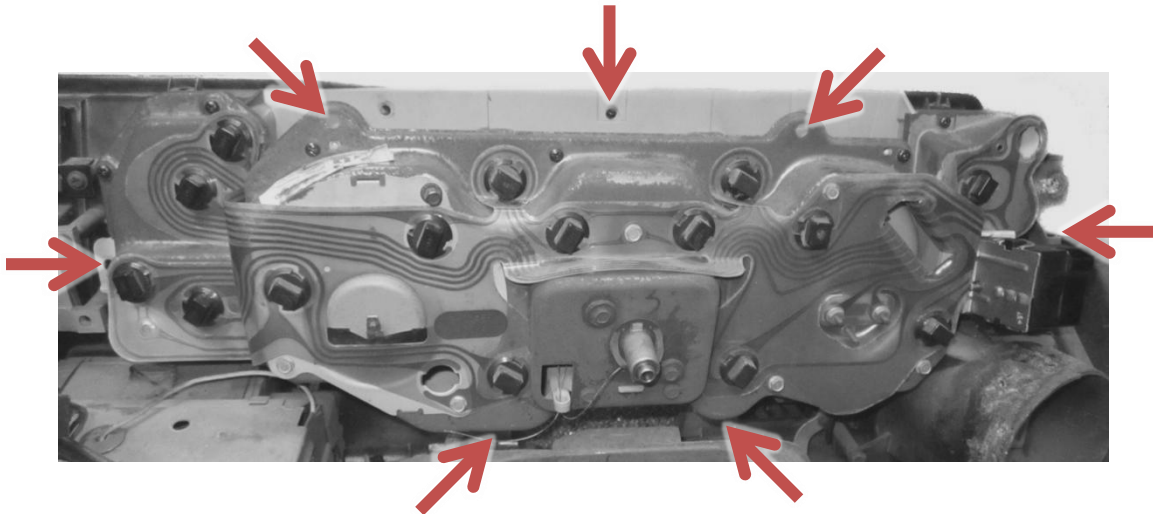


10x 6-20 x 5/8" Screws

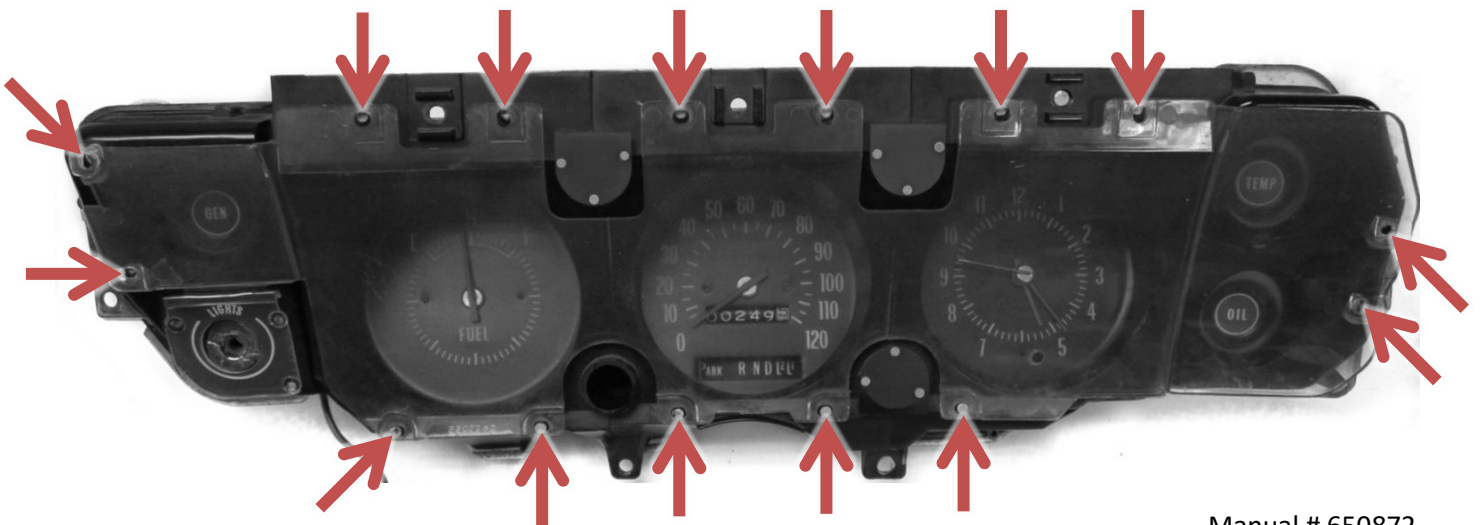


Installation

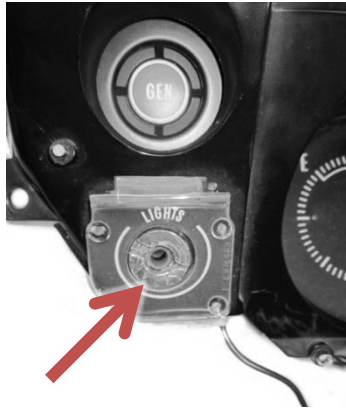
1. Remove the stock gauge housing from the dash.
 - a. Remove the four screws for the lower steering column cover, then remove the two nuts to drop the steering column. This will allow access behind the dash.
 - b. Remove the dash pad to have access from the top side; the entire plastic dash is riveted to the metal frame underneath. By removing the 6x 7/16" hex bolts you can separate the dash from the car. The locations of these bolts are: 2x on the far-left driver side (upper and lower), 1x by the steering column support, 1x behind left side of the glove box and 2x on the far-right passenger side. Also remove the front speaker, emergency brake release handle, and the headlight knob (there is a push button to release the knob on the opposing side of the harness).
 - c. You can now remove the stock cluster by disconnecting the left and right indicator harnesses. Remove the speed cable and the fuel gauge harness. If equipped with a clock, this must be disconnected as well.
 - d. The stock gauge cluster is mounted to the dash in seven locations as shown below. Remove these screws.



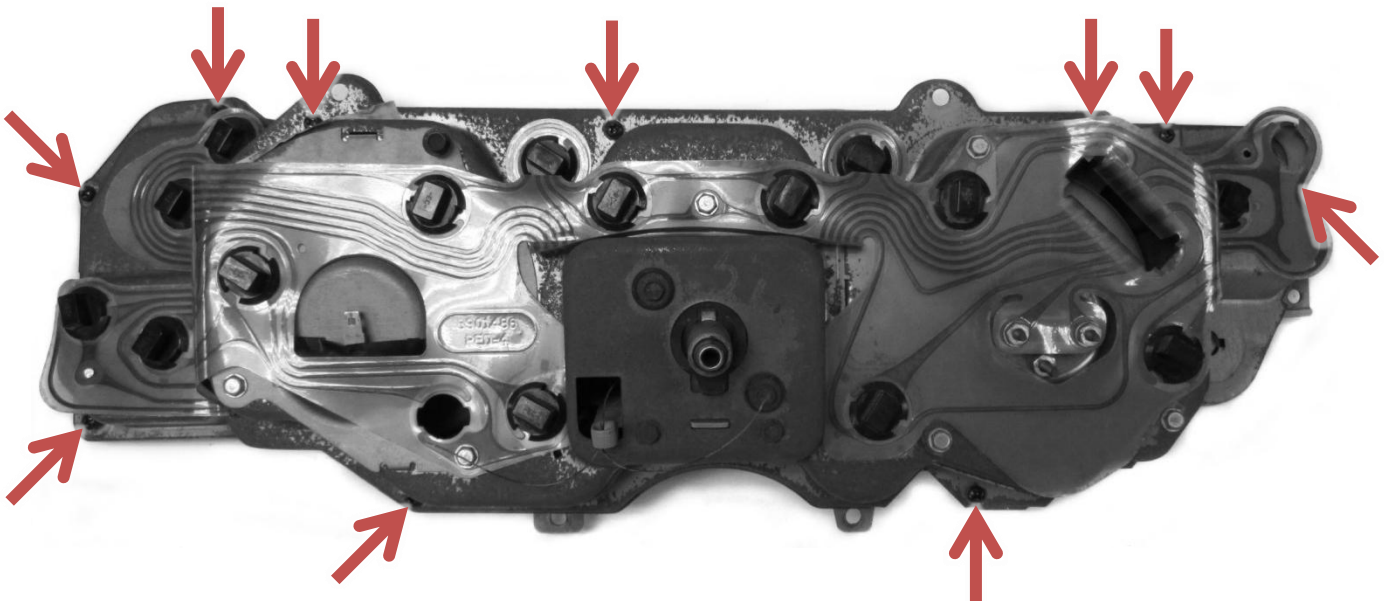
2. With a side cutter, cut the plastic tabs off to remove the factory lens, as it won't be reused.



- Using a large flat head screwdriver or a quarter, remove the screw that secures the headlight switch to the bezel.

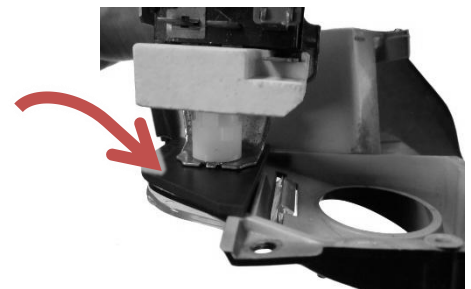
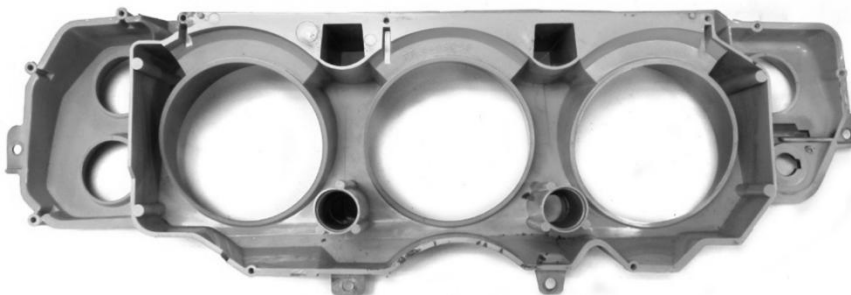


- Remove the 10 screws holding the factory gauges to the carrier.

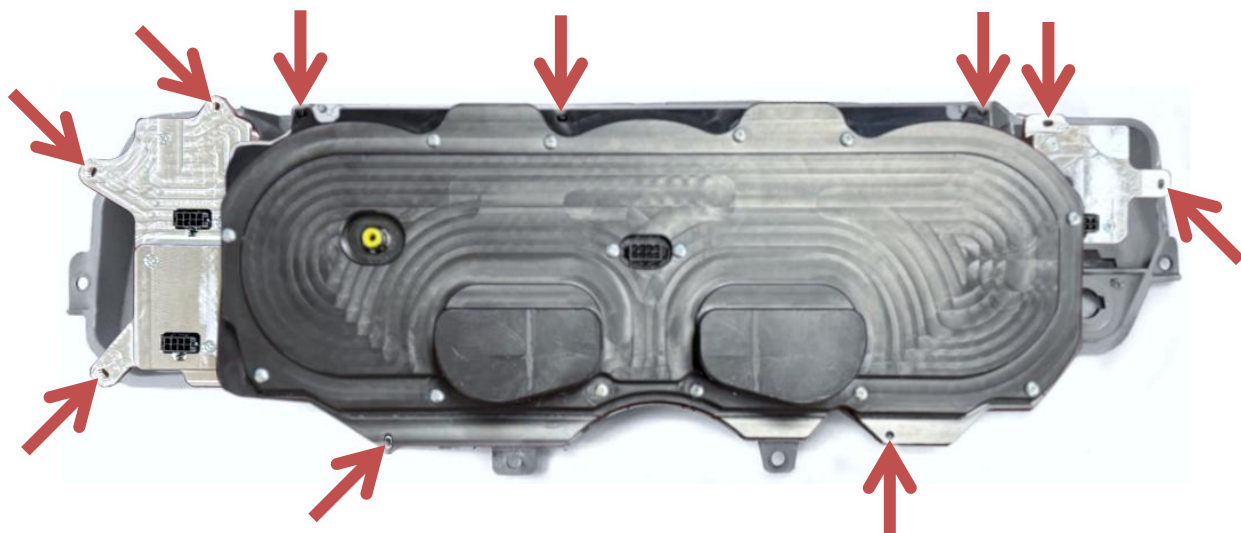


- With the factory gauges and lenses removed, you will be left with a bare carrier, as shown below.

Fit the ABS plastic headlight bracket over the back of the headlight switch opening and re-install the headlight switch.

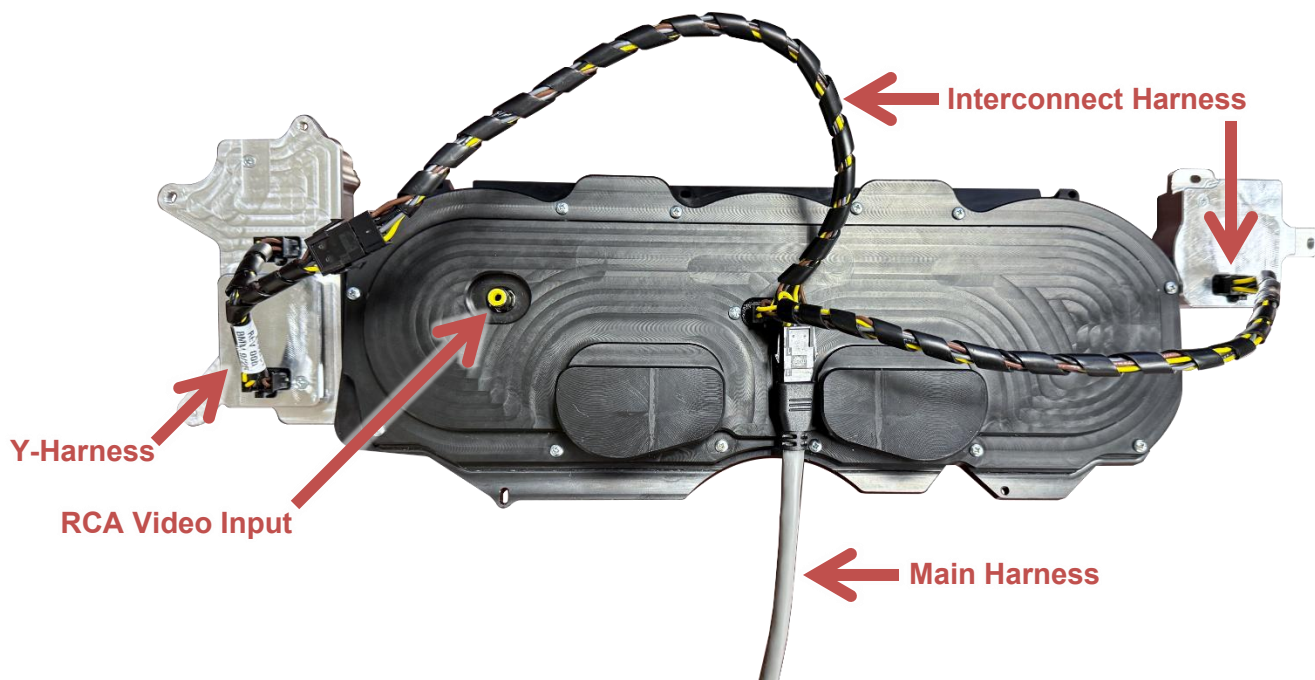


6. Install the new GRFX display using the 10x included **6-20 x 5/8" Screws**. All of the stock screw holes will be used.



7. Connect the three new GRFX display units using the provided **Y-Harness** and **Interconnect Harness**, as shown below. Then, connect the **36" Main Harness** to the interconnect harness.

Carefully route the open end of the main harness to the desired control box mounting location. If desired, a backup camera can also be connected using the available RCA input.



8. Re-install the cluster into the car and reassemble the dash in reverse order of Step 1 and refer to the main manual for wiring instructions to complete the GRFX system installation.



⚠ WARNING: This product can expose you to chemicals including lead, which is known to the State of California to cause cancer and birth defects or other reproductive harm. For more information go to www.P65Warnings.ca.gov



4510 W. 61st St. North
Sioux Falls, SD 57107
www.dakotadigital.com
dakotasupport@dakotadigital.com

Phone (605) 332-6513
Fax (605) 339-4106

© Copyright 2025 - Dakota Digital